

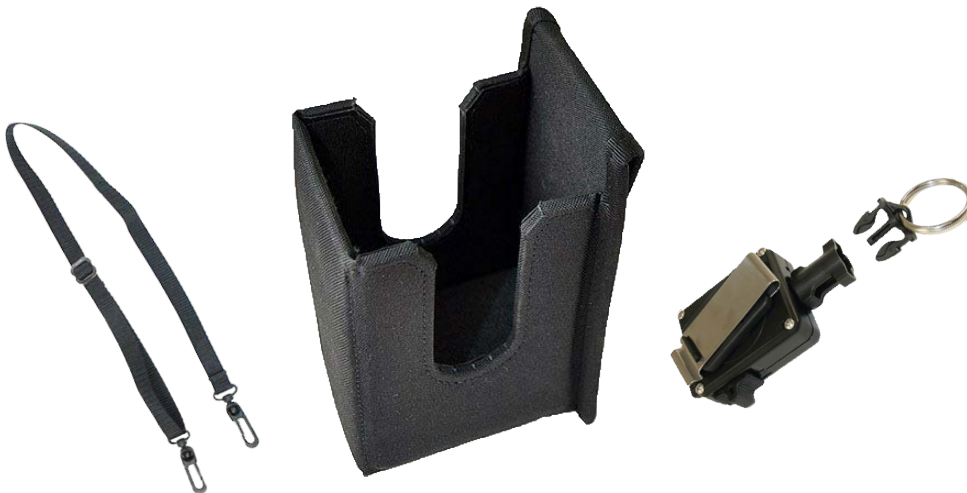


UltimaCase Designs Holster, Retractor, and Tether Solution for Car Wash Company's Scanners.

A car wash company was looking for a solution to hold their PM8500/9500 scanner devices in the instances they needed to go hands-free.

They wanted their scanning device to stay on the user, and not need to be set down on the ground or another surface. Even when attached to the user, the device also needed to be extended to reach and scan barcodes.

To solve this problem, the company found a 3- piece solution with UltimaCase that includes a retractor, holster, and tether.



FEATURES

Holster has openings on two sides for left or right handed use.

Retractor has 42" super strong Kevlar line.

Tether prevents accidental dropping of handheld unit.

DESIGN

The retractor (**U6090DW**) fastens to the belt and device to prevent drops. The line can be extended for reaching to scan barcodes, but when not extended, the line holds the device tight against the body.

The tether (**N4742DW**) comes in to offer more slack than the retractor, so scanning short distances can happen quickly.

The customer didn't want the device to be dangling from the belt and bumping against the user or car, so a holster (**AD2129DW**) offers secure holding in place.

Checkout our custom solutions at
www.ultimacase.com

UltimaCase by AGORA Edge

Phone: 833-234-1664
2101 28th Street North,
St. Petersburg, Florida 33713